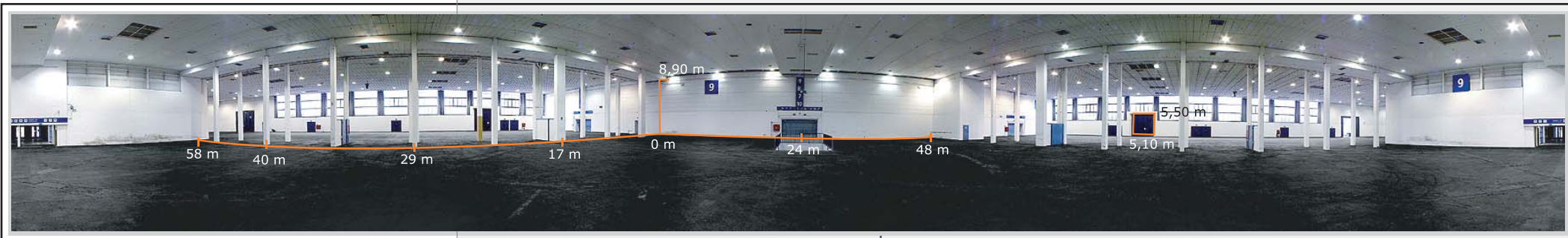


## Technical Data Hall 9a

length	84 m
width	29 m
gross area m <sup>2</sup>	7.672 m <sup>2</sup>
clearance height	8,90 m
utility floor on a solid base	no
solid floor with cable ducts	yes
maximum permissible surface load	50 kN/m <sup>2</sup> (In the vicinity of ducts only 10 kN/m <sup>2</sup> )
fork lift and truck with wheel load	3,5 t
available intermediate ceiling	yes
suspension points max. load 2 kN/pt.	no
daylight from window	one sided
number of gates	2
entrance dimensions (width x height)	4,73 m x 5,00 m
gas connection possible	yes
cooling	yes
water connection up to 50 mm	yes
water drainage up to 100 mm	yes
firefighting system	sprinkler system
supports	yes
freight elevators	no

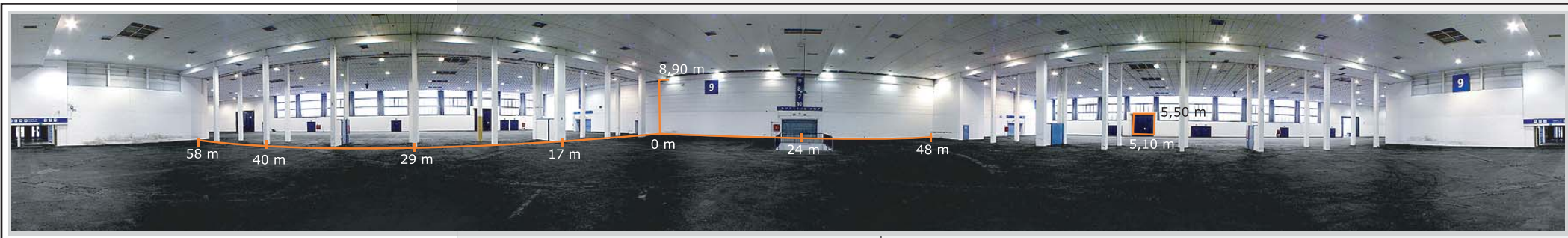
# HALldata



## Technical Data Hall 9b

length	58 m
width	48 m
gross area m <sup>2</sup>	7.672 m <sup>2</sup>
clearance height	8,90 m
utility floor on a solid base	no
solid floor with cable ducts	yes
maximum permissible surface load	50 kN/m <sup>2</sup> (In the vicinity of ducts only 10 kN/m <sup>2</sup> )
fork lift and truck with wheel load	3,5 t
available intermediate ceiling	yes
suspension points max. load 2 kN/pt.	no
daylight from window	none
number of gates	none
entrance dimensions (width x height)	via 9a and 9c
gas connection possible	yes
cooling	yes
water connection up to 50 mm	yes
water drainage up to 100 mm	yes
firefighting system	sprinkler system
supports	yes
freight elevators	no

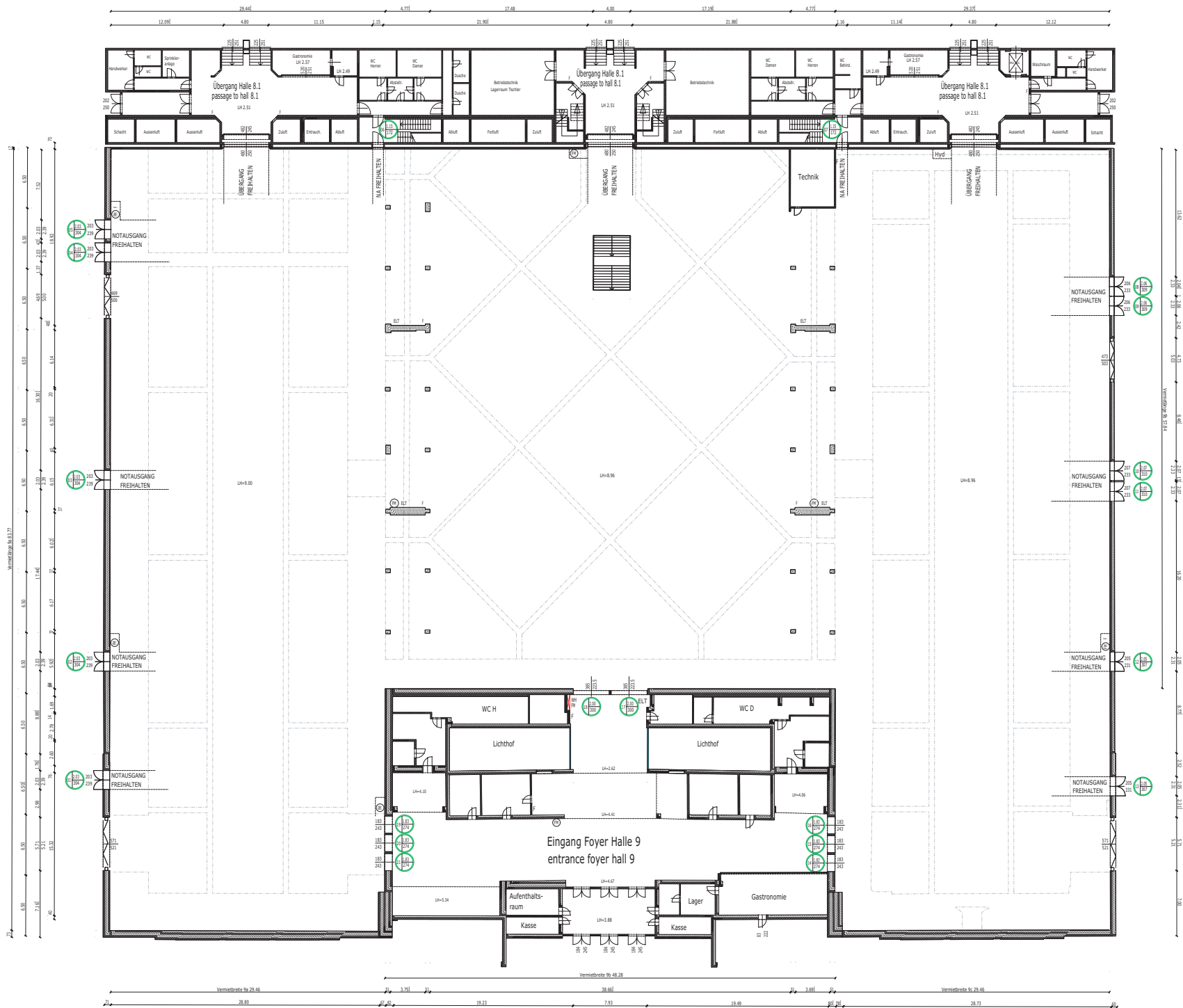
# HALldata



## Technical Data Hall 9c

length	84 m
width	29 m
gross area m <sup>2</sup>	7.672 m <sup>2</sup>
clearance height	8,90 m
utility floor on a solid base	no
solid floor with cable ducts	yes
maximum permissible surface load	50 kN/m <sup>2</sup> (In the vicinity of ducts only 10 kN/m <sup>2</sup> )
fork lift and truck with wheel load	3,5 t
available intermediate ceiling	yes
suspension points max. load 2 kN/pt.	no
daylight from window	one sided
number of gates	2
entrance dimensions (width x height)	4,73 m x 5,00 m
gas connection possible	yes
cooling	yes
water connection up to 50 mm	yes
water drainage up to 100 mm	yes
firefighting system	sprinkler system
supports	yes
freight elevators	no

# HALldata



Halle 9a





hall 9a

Halle 9b

hall 9b

Halle 9c

hall 9c

-  NA-Breite Anzahl Fluchtpersonen
-  Vermietbarer Nebenraum
-  Lagerraum Counter
-  Standorte Counter

